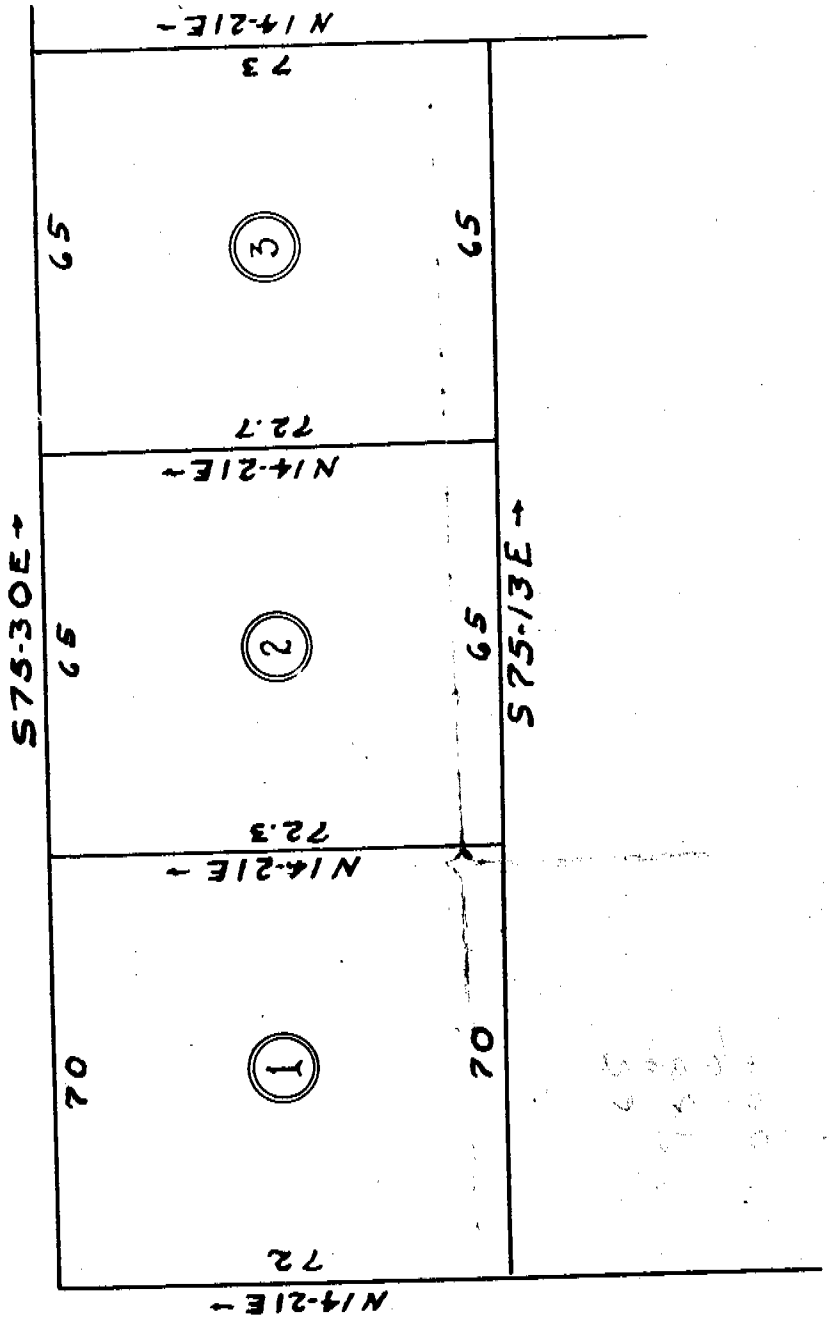


C. M. FURMAN, JR.
 CIVIL ENGINEER
 GREENVILLE, S. C.
 OFFICE: 11 W. COURT STREET
 PHONES: OFFICE 1506
 RES 2903

PROPERTY
 OF
J. F. WELBORN

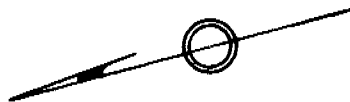
HIGHWAYS
 SEWERS
 STREETS
 SIDEWALKS
 DRAINAGE
 LAND SURVEYS
 SUB-DIVISIONS
 TERRACES

ANSEL ST.



MONAGHAN AVE

TO SANSSOUCI



I hereby certify that this is a true and accurate
 survey of the above described property.